



Water Piping Systems & Solutions

www.jci-concept.com






About JCI

“ JCI is the abbreviation of Jeffrey Consolidated Industries where from the name itself has interpreted the definition and belief of the founder Jeffrey who has a concern and emphasis on the relatedness among the industries. JCI was established as a family based business and its value chain & system has been growing and integrated. ”

Long term cooperation and coordination relationship and continuous improvement are the critical success factors in this strong competitive and rapidly changing business environment. Thus JCI believes trustworthiness and good working culture have to be established and cultivated to create such stable and strong value chain & system.



The main products of JCI are uPVC soil, waste & ventilating pipes and pipe fittings. JCI uPVC soil, waste & ventilating pipes and pipe fittings are approved by SIRIM Berhad (Standards of Industrial Research Institute of Malaysia) which determines principles of standardization in light of Malaysia accelerating industrial development and ISO (International Organization for Standardization). In order to satisfy requirement and needs of customers, JCI has expanded, invested and participated in other water piping systems and solutions like water pressure piping systems, sanitary products and other accessories for various application in water and building industries.

JCI develops and continuously monitors programs of quality system and procedures in aspect of innovation, production scheduling, quality assurance testing, warehouse management, delivery & logistic, financial management, customer management etc. from internal management to customer satisfaction with its unique sustainable success management.

JCI insists on providing services to the customers in more professional manners, thus it endeavors to improve quality, stick to the customers and integrate the similarities in order to satisfy wide market requirements.

We are grateful for your appreciation of our catalogue and please do not hesitate to approach us for any further queries and enquiries. Thank you.

Sincerely,

JCI Import & Export Sdn Bhd

Contents

**5 - 21 Soil, Waste, Ventilating &
Rainwater Down Pipe System**

White uPVC Pipes BSEN 1329, BS 5255, BS 4514 & MS 1063
White uPVC Fittings BSEN 1329, BS 5255, BS 4514, MS 1063,
SS 213 & AS 1415

22 - 23 Underground Drainage Pipe System

Brown uPVC Pipes BSEN 1401, BS 4660, BS 5481 & MS 979
Brown uPVC Fittings BSEN 1401, BS 4660, BS 5481, MS 979,
SS 272 & AS 1260

24 - 30 Pressure & Non Pressure Pipe System

Grey uPVC Pipes BS 3505, BS 3506, MS 628, MS 762 & JIS K6741
Grey uPVC Fittings BS 4346, JIS K6743 & JIS K6739

31 - 35 Pressure Pipe System

Blue ABS Pipes MS 1419 & AS 3518
Blue ABS Fittings MS 1419 & AS 3518

36 - 41 PE Pipe System

Black PE Pipes MS 1058
Black PP Fittings BS 5114

42 - 43 WC System

Plastic Cistern MS 795

Soil, Waste, Ventilating & Rainwater Down Pipe System

BSEN 1329, BS 5255, BS 4514, MS 1063, SS 213 & AS 1415

90 Degree Bend FF



90 Degree Bend MF



90 Degree Bend FF, IO



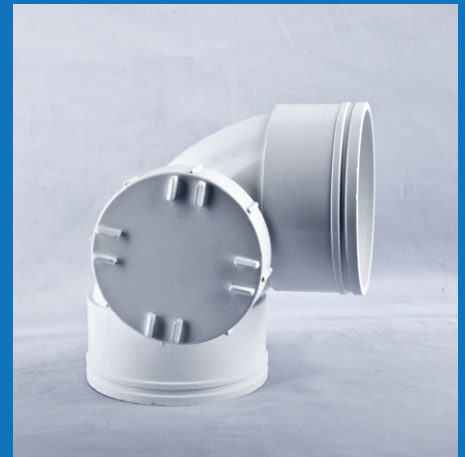
90 Degree Bend MF, IO



90 Degree Bend FF, Rear Big Access



90 Degree Bend FF, Side Big Access



Bend		Inch	1-1/4"	1-1/2"	2"	3"	4"	6"	8"	10"	12"
		mm	32	40	50	82	110	160	200	250	315
1	90 Degree Bend FF		v	v	v	v	v	v	v		
2	90 Degree Bend MF		v	v	v	v	v	v			
3	90 Degree Bend FF, IO		v	v	v	v	v	v			
4	90 Degree Bend MF, IO		v	v	v	v	v	v			
5	90 Degree Bend FF, Rear Big Access						v	v			
6	90 Degree Bend FF, Side Big Access						v				

Imported

Soil, Waste, Ventilating & Rainwater Down Pipe System

BSEN 1329, BS 5255, BS 4514, MS 1063, SS 213 & AS 1415

90 Degree Bend FF, 2" Vent



90 Degree Bend MF, 2" Vent



45 Degree Bend FF



45 Degree Bend MF



45 Degree Bend FF, IO



45 Degree Bend MF, IO



Bend		Inch	1-1/4"	1-1/2"	2"	3"	4"	6"	8"	10"	12"
		mm	32	40	50	82	110	160	200	250	315
1	90 Degree Bend FF, 2" Vent						v				
2	90 Degree Bend MF, 2" Vent						v				
3	45 Degree Bend FF		v	v	v	v	v	v	v	✈	✈
4	45 Degree Bend MF			v	v	v	v	v			
5	45 Degree Bend FF, IO				v	v	v	v			
6	45 Degree Bend MF, IO				v	v	v	v			

✈ Imported

Soil, Waste, Ventilating & Rainwater Down Pipe System

BSEN 1329, BS 5255, BS 4514, MS 1063, SS 213 & AS 1415

90 Degree Reducing Bend FF



90 Degree Reducing Bend FF, 2" Vent



90 Degree Reducing Bend MF, 2" Vent



Bend		Inch	4" x 3"
		mm	110 x 82
1	90 Degree Reducing Bend FF		v
2	90 Degree Reducing Bend FF, 2" Vent		v
3	90 Degree Reducing Bend MF, 2" Vent		v

 Imported

Soil, Waste, Ventilating & Rainwater Down Pipe System

BSEN 1329, BS 5255, BS 4514, MS 1063, SS 213 & AS 1415

90 Degree Single Sweep Tee FF



90 Degree Single Sweep Tee MF



90 Degree Single Sweep Tee FF, IO



90 Degree Single Sweep Tee FF, Big Access



Branches / Tee		Inch	1-1/4"	1-1/2"	2"	3"	4"	6"	8"	10"
		mm	32	40	50	82	110	160	200	250
1	90 Degree Single Sweep Tee FF		v	v	v	v	v	v		
2	90 Degree Single Sweep Tee MF					v	v	v		
3	90 Degree Single Sweep Tee FF, IO				v	v	v	v		
4	90 Degree Single Sweep Tee FF, Big Access						v	v		

Imported

Soil, Waste, Ventilating & Rainwater Down Pipe System

BSEN 1329, BS 5255, BS 4514, MS 1063, SS 213 & AS 1415

90 Degree Reducing Sweep Tee FF



90 Degree Reducing Sweep Tee MF



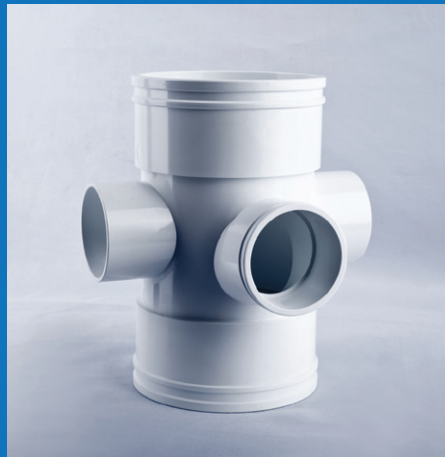
90 Degree Reducing Sweep Tee FF, IO



90 Degree Reducing Sweep Tee FF, Big Access



90 Degree Reducing Sweep Tee with 2" Socket Branch FF



90 Degree Reducing Sweep Tee with 2" Socket Branch MF



Branches / Tee		Inch	3" x 2"	4" x 2"	4" x 3"	6" x 4"	8" x 2"	8" x 4"
		mm	82 x 50	110 x 50	110 x 82	160 x 110	200 x 50	200 x 110
1	90 Degree Reducing Sweep Tee FF		v	v	v	v	v	v
2	90 Degree Reducing Sweep Tee MF			v	v	v		
3	90 Degree Reducing Sweep Tee FF, IO		v		v	v		
4	90 Degree Reducing Sweep Tee FF, Big Access					v		
5	90 Degree Reducing Sweep Tee with 2" Socket Branch FF			v	v			
6	90 Degree Reducing Sweep Tee with 2" Socket Branch MF			v				

 Imported

Soil, Waste, Ventilating & Rainwater Down Pipe System

BSEN 1329, BS 5255, BS 4514, MS 1063, SS 213 & AS 1415

45 Degree Y-Tee



45 Degree Reducing Y-Tee



Cross Tee FF



Reducing Cross Tee FF



Cross Tee FF, Big Access



Boss Connector



Branches / Tee		Inch	2"	4"	4" x 2"	4" x 3"	6" x 4"	8"	10"
		mm	50	110	110 x 50	110 x 82	160 x 110	200	250
1	45 Degree Y-Tee		v	v					
2	45 Degree Reducing Y-Tee				v		v		
3	Cross Tee FF			v					
4	Reducing Cross Tee FF				v		v		
5	Cross Tee FF, Big Access			v					
6	Boss Connector				v	v			

Imported

Soil, Waste, Ventilating & Rainwater Down Pipe System

BSEN 1329, BS 5255, BS 4514, MS 1063, SS 213 & AS 1415

Socket



Access Fitting FF



Sleeve Socket (Angle Type)



Sleeve Socket (Round Type)



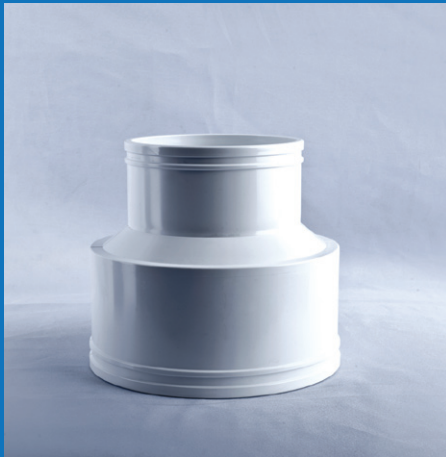
Socket		Inch	1-1/4"	1-1/2"	2"	3"	4"	6"	8"	10"	12"
		mm	32	40	50	82	110	160	200	250	315
1	Socket		v	v	v	v	v	v	v		
2	Access Fitting FF					v	v	v	v		
3	Sleeve Socket (Angle Type)				v	v	v	v			
4	Sleeve Socket (Round Type)				v	v	v	v			

Imported

Soil, Waste, Ventilating & Rainwater Down Pipe System

BSEN 1329, BS 5255, BS 4514, MS 1063, SS 213 & AS 1415

Concentric Tapper FF



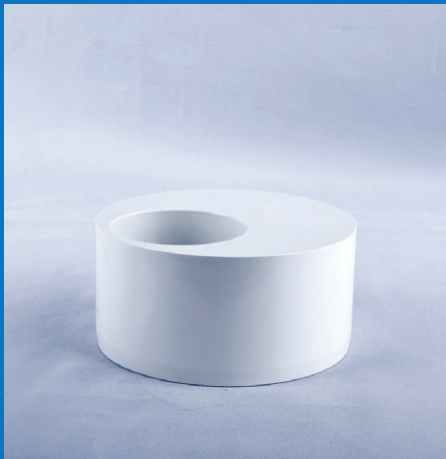
Level Invert Tapper FF



Level Invert Tapper MF



Reducing Bush



Increaser / Reducer		Inch	2" x 1-1/4"	2" x 1-1/2"	3" x 2"	4" x 2"	4" x 3"	6" x 4"	8" x 6"	10" x 6"	10" x 8"	12" x 8"	12" x 10"
		mm	50 x 32	50 x 40	82 x 50	110 x 50	110 x 82	160 x 110	200 x 160	250 x 160	250 x 200	315 x 200	315 x 250
1	Concentric Tapper FF							v					
2	Level Invert Tapper FF				v	v			v	✘	✘	✘	✘
3	Level Invert Tapper MF				v	v							
4	Reducing Bush		v	v	v	v	v						

✘ Imported

Soil, Waste, Ventilating & Rainwater Down Pipe System

BSEN 1329, BS 5255, BS 4514, MS 1063, SS 213 & AS 1415

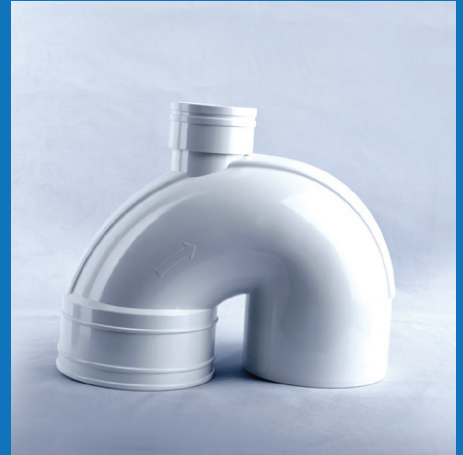
'U' Trap Body MF



'U' Trap Body MF, IO



'U' Trap Body MF, 2" Vent



'S' Trap Body Set



'S' Trap Body Set with IO



'S' Trap Body Set with 2" Vent



Traps		Inch	4"
		mm	110
1	'U' Trap Body MF		v
2	'U' Trap Body MF, IO		v
3	'U' Trap Body MF, 2" Vent		v
4	'S' Trap Body Set		v
5	'S' Trap Body Set with IO		v
6	'S' Trap Body Set with 2" Vent		v

✈ Imported

Soil, Waste, Ventilating & Rainwater Down Pipe System

BSEN 1329, BS 5255, BS 4514, MS 1063, SS 213 & AS 1415

'P' Trap Body Set



'P' Trap Body Set With IO



'P' Trap Body Set with 2" Vent



'P' Trap Body Set 4" x 3"



'P' Trap with IO



Floor Gully Trap



Traps		Inch	2"	4"	4" x 2"	4" x 3"
		mm	50	110	110 x 50	110 x 82
1	'P' Trap Body Set			v		
2	'P' Trap Body Set with IO			v		
3	'P' Trap Body Set with 2" Vent			v		
4	'P' Trap Body Set 4" x 3"					v
5	'P' Trap with IO		✘			
6	Floor Gully Trap				v	v

✘ Imported

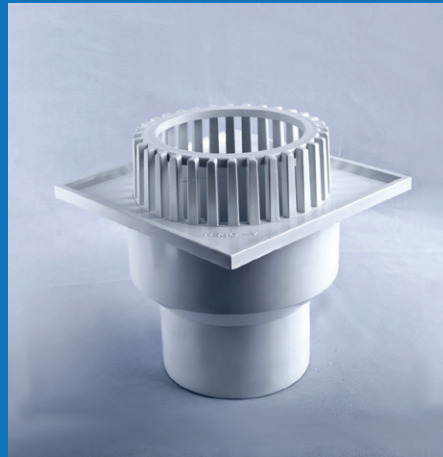
Soil, Waste, Ventilating & Rainwater Down Pipe System

BSEN 1329, BS 5255, BS 4514, MS 1063, SS 213 & AS 1415

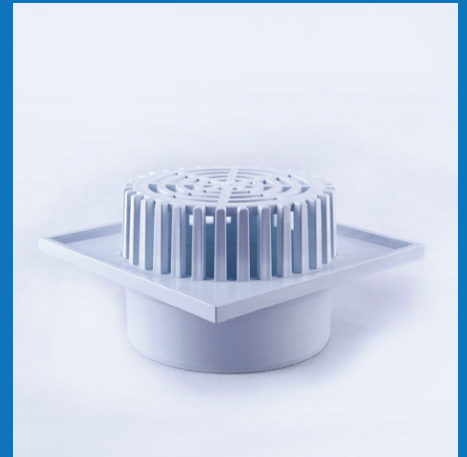
**Balcony Outlet,
Square Base (Dome)**



**Balcony Outlet,
Square Base (Pipe)**



Dome Roof Outlet



Dome Grating



Balcony Outlet & Floor Grating		Inch	2"	3"	4"	6"	8"
		mm	50	82	110	160	200
1	Balcony Outlet, Square Base (Dome)			v	v	v	v
2	Balcony Outlet, Square Base (Pipe)			v	v	v	v
3	Dome Roof Outlet				v	v	
4	Dome Grating		v	v	v	v	

 Imported

Soil, Waste, Ventilating & Rainwater Down Pipe System

BSEN 1329, BS 5255, BS 4514, MS 1063, SS 213 & AS 1415

6" Floor Trap Grating with Anti Mosquitoes Filter



6" Screw Floor Trap Grating (Dome)



6" Screw Floor Trap Grating (Flat)



6" Floor Trap Grating with 1-1/2" Inlet Connector



Floor Grating		Inch	6"
		mm	160
1	6" Floor Trap Grating with Anti Mosquitoes Filter		v
2	6" Screw Floor Trap Grating (Dome)		v
3	6" Screw Floor Trap Grating (Flat)		v
4	6" Floor Trap Grating with 1-1/2" Inlet Connector		v

 Imported

Soil, Waste, Ventilating & Rainwater Down Pipe System

BSEN 1329, BS 5255, BS 4514, MS 1063, SS 213 & AS 1415

Spigot Adaptor



Single Cast Iron Connector FF



Single Cast Iron Connector MF



45 Degree Cast Iron Connector Bend FF



Cast Iron Connector		Inch	2"	3"	4"	6"
		mm	50	82	110	160
1	Spigot Adaptor				v	v
2	Single Cast Iron Connector FF		v	v	v	v
3	Single Cast Iron Connector MF		v	v	v	v
4	45 Degree Cast Iron Connector Bend FF		v			

 Imported

Soil, Waste, Ventilating & Rainwater Down Pipe System

BSEN 1329, BS 5255, BS 4514, MS 1063, SS 213 & AS 1415

WC Straight Pan Connector



WC Pan Connector 1" Offset



WC Pan Connector 2" Offset



WC Pan Collar (Rigid)



WC Pan Collar 2" Offset (Rigid)



WC Pan Collar 3" Offset (Rigid)



WC Connector		Inch	4"
		mm	110
1	WC Straight Pan Connector		✘
2	WC Pan Connector 1" Offset		✘
3	WC Pan Connector 2" Offset		✘
4	WC Pan Collar (Rigid)		✓
5	WC Pan Collar 2" Offset (Rigid)		✓
6	WC Pan Collar 3" Offset (Rigid)		✓

✘ Imported

Soil, Waste, Ventilating & Rainwater Down Pipe System

BSEN 1329, BS 5255, BS 4514, MS 1063, SS 213 & AS 1415

End Cap



Access Cap & Plug FF



Vent Cowl (Female Type)



Vent Cowl (Insert Type)



End Seals / Ventilation		Inch	2"	3"	4"	6"
		mm	50	82	110	160
1	End Cap		✈		✈	✈
2	Access Cap & Plug FF		v	v	v	
3	Vent Cowl (Female Type)		✈	✈	✈	✈
4	Vent Cowl (Insert Type)				v	

✈ Imported

Soil, Waste, Ventilating & Rainwater Down Pipe System

BSEN 1329, BS 5255, BS 4514, MS 1063, SS 213 & AS 1415

Collar Bracket



Plain Threaded Elbow



Plain Threaded Socket



Bracket / Waste Connector		Inch	1-1/4"	1-1/2"	2"	3"	4"
		mm	32	40	50	82	110
1	Collar Bracket				v	v	v
2	Plain Threaded Elbow		✘	✘			
3	Plain Threaded Socket		✘	✘			

✘ Imported

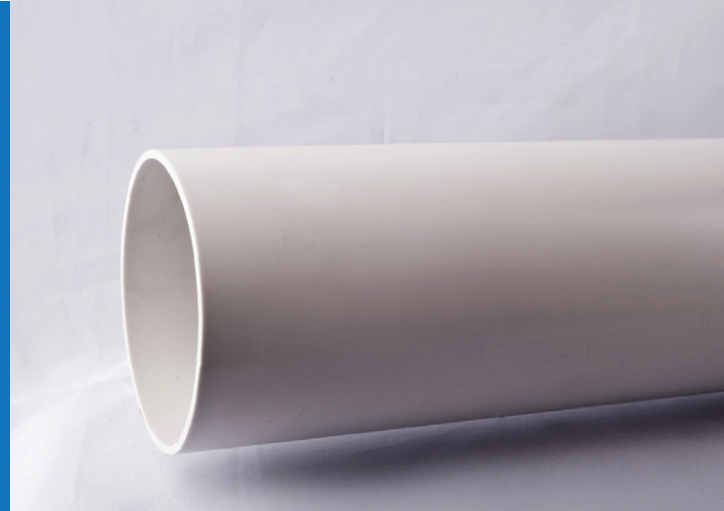
White uPVC Pipes

Soil, Waste, Ventilating & Rainwater Down Pipe System

BSEN 1329, BS 5255, BS 4514 & MS 1063

BS 5255 & BS 4514

Nominal Size		Mean Outside Diameter (mm)		Wall Thickness (mm)	
Inch	mm	min	max	min	max
1-1/4"	32	36.15	36.45	1.8	2.2
1-1/2"	40	42.75	43.05	1.9	2.3
2"	50	55.75	56.05	2.0	2.4
3"	82	82.4	82.8	3.2	-
4"	110	110.0	110.4	3.2	-
6"	160	160.0	160.6	3.2	-



BSEN 1329 & MS 1063 (Metric Series)

Nominal Size		Mean Outside Diameter (mm)		Wall Thickness Application Area (mm)			
				B		BD	
Inch	mm	min	max	min	max	min	max
1-1/4"	32	32.0	32.2	3.0	3.5	-	-
1-1/2"	40	40.0	40.2	3.0	3.5	-	-
2"	50	50.0	50.2	3.0	3.5	-	-
3"	82	82.0	82.3	3.0	3.5	3.0	3.5
4"	110	110.0	110.3	3.2	3.8	3.2	3.8
6"	160	160.0	160.4	3.2	3.8	4.0	4.6
8"	200	200.0	200.5	3.9	4.5	4.9	5.6
10"	250	250.0	250.5	4.9	5.6	6.2	7.1
12"	315	315.0	315.6	6.2	7.1	7.7	8.7

BSEN 1329 & MS 1063 (Series Based on Inch Dimensions)

Nominal Size		Mean Outside Diameter (mm)		Wall Thickness Application Area B (mm)	
Inch	mm	min	max	min	max
1-1/4"	36	36.2	36.5	3.0	3.5
1-1/2"	43	42.8	43.1	3.0	3.5
2"	56	55.8	56.1	3.0	3.5

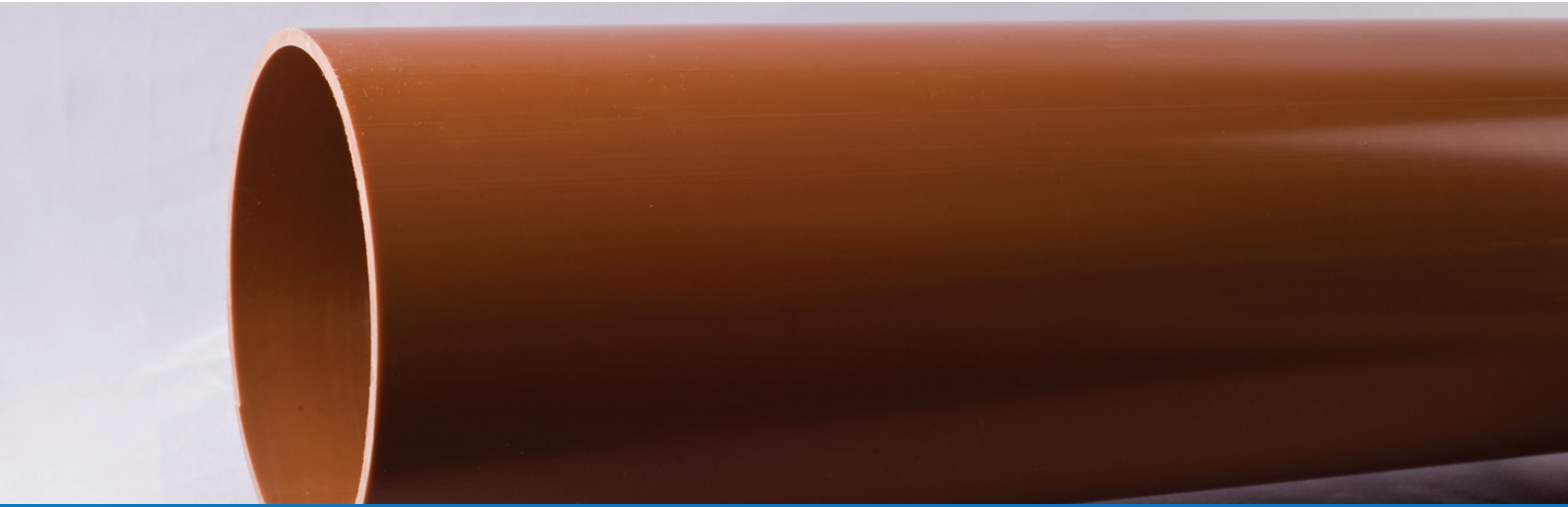
Note : B - Inside the building.

BD - Inside building and buried within the building structure.

Brown uPVC Pipes

Underground Drainage Pipe System

BSEN 1401, BS 4660, BS 5481 & MS 979



BS 4660, BS 5481 & MS 979

Nominal Size		Mean Outside Diameter (mm)		Wall Thickness (mm)
Inch	mm	min	max	min
4"	110	110.0	110.4	3.2
6"	160	160.0	160.6	4.1
8"	200	200.0	200.6	4.9
10"	250	250.0	250.7	6.1
12"	315	315.0	315.9	7.7

BSEN 1401

Nominal Size		Mean Outside Diameter (mm)		Wall Thickness (mm)					
				SN 2 SDR 51 "U"		SN 4 SDR 41		SN 8 SDR 34	
Inch	mm	min	max	min	max	min	max	min	max
4"	110	110.0	110.3	-	-	3.2	3.8	3.2	3.8
6"	160	160.0	160.4	3.2	3.8	4.0	4.6	4.7	5.4
8"	200	200.0	200.5	3.9	4.5	4.9	5.6	5.9	6.7
10"	250	250.0	250.5	4.9	5.6	6.2	7.1	7.3	8.3
12"	315	315.0	315.6	6.2	7.1	7.7	8.7	9.2	10.4

Note : "U" - Inside the building. "D" - Inside building and buried within the building structure.

Underground Drainage Pipe System

BSEN 1401, BS 4660, BS 5481, MS 979, SS 272 & AS 1260

45 Degree Underground Bend FF



90 Degree Underground Bend FF



90 Degree Underground Sweep Tee FF



90 Degree Underground Reducing Sweep Tee FF



Underground Socket



Underground 'U' Trap Body MF



Description	Inch	4"	6"	8"	6" x 4"
	mm	110	160	200	160 x 110
1 45 Degree Underground Bend FF		v	v	v	
2 90 Degree Underground Bend FF		v	v	v	
3 90 Degree Underground Sweep Tee FF		v	v		
4 90 Degree Underground Reducing Sweep Tee FF					v
5 Underground Socket		v	v	v	
6 Underground 'U' Trap Body MF		v			

 Imported

Grey uPVC Fittings

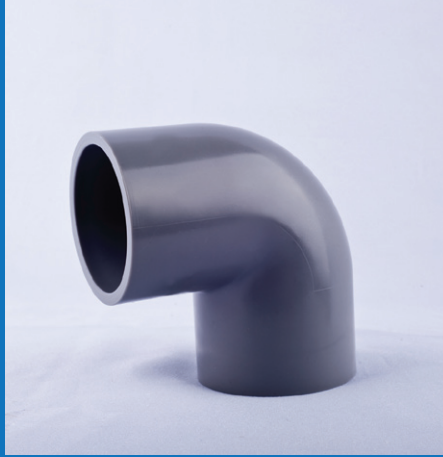
uPVC Pressure & Non Pressure Pipe System

BS 4346, JIS K6743 & JIS K6739

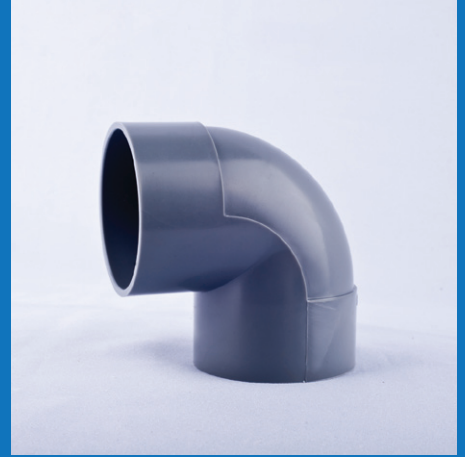
45 Degree Elbow 'SWV'



90 Degree Elbow 'D'



90 Degree Elbow 'SWV'



Fabricated Lond Bend



Socket 'D'



Socket 'SWV'



	'D' - Thick Wall 'SWV' - Thin Wall	Inch	1/2"	3/4"	1"	1-1/4"	1-1/2"	2"	3"	4"	6"	8"	10"	12"
		mm	15	20	25	32	40	50	80	100	150	200	250	300
1	45 Degree Elbow 'SWV'								v	v	v	✈	✈	✈
2	90 Degree Elbow 'D'		v	v	v	v	v	v	v	v	v	✈	✈	
3	90 Degree Elbow 'SWV'					v	v	v	v	v	v	v	✈	✈
4	Fabricated Lond Bend							v	v	v	v	v		
5	Socket 'D'		v	v	v	v	v	v	v	v	v	✈	✈	
6	Socket 'SWV'					v	v	v	v	v	v	✈	✈	

✈ Imported

Grey uPVC Fittings

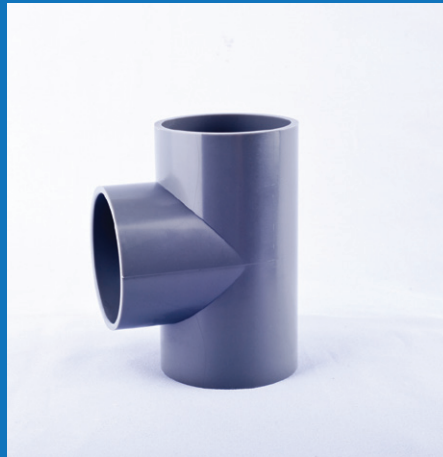
uPVC Pressure & Non Pressure Pipe System

BS 4346, JIS K6743 & JIS K6739

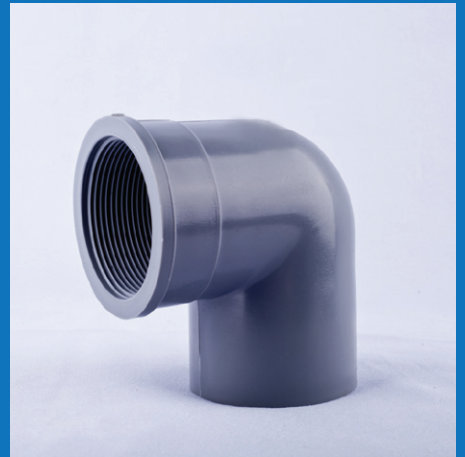
Tee 'D'



Tee 'SWV'



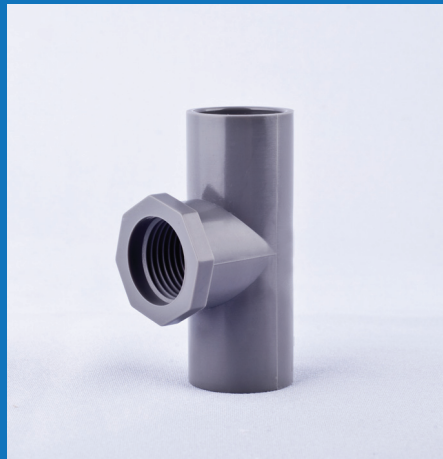
Plain Threaded Elbow



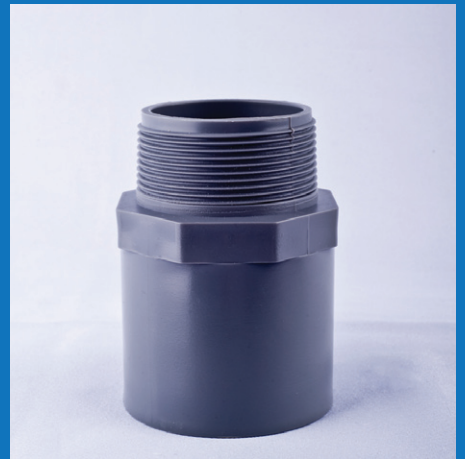
Plain Threaded Socket



Plain Threaded Tee



Valve Socket



	'D' - Thick Wall 'SWV' - Thin Wall	Inch	1/2"	3/4"	1"	1-1/4"	1-1/2"	2"	3"	4"	6"	8"	10"	12"
		mm	15	20	25	32	40	50	80	100	150	200	250	300
1	Tee 'D'		v	v	v	v	v	v	v	v	✘	✘	✘	
2	Tee 'SWV'					v	v	v	v	v	✘	✘	✘	
3	Plain Threaded Elbow		v	v	v	v	v	v						
4	Plain Threaded Socket		v	v	v	v	v	v	v					
5	Plain Threaded Tee		v											
6	Valve Socket		v	v	v	v	v	v	v					

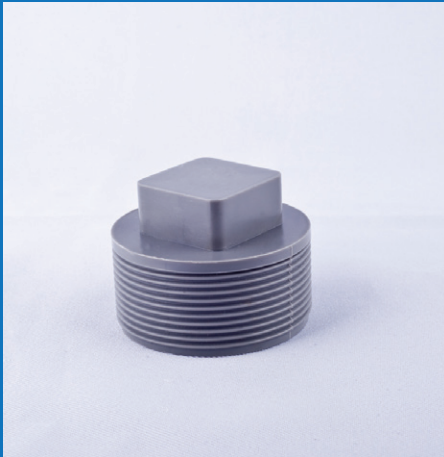
✘ Imported

Grey uPVC Fittings

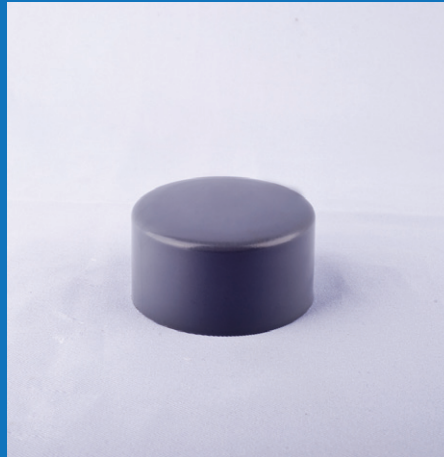
uPVC Pressure & Non Pressure Pipe System

BS 4346, JIS K6743 & JIS K6739

Plug



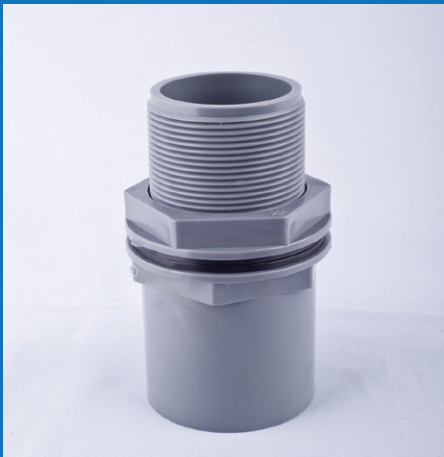
End Cap



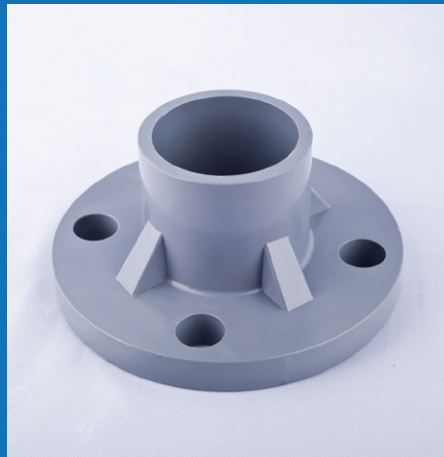
Pipe Clip



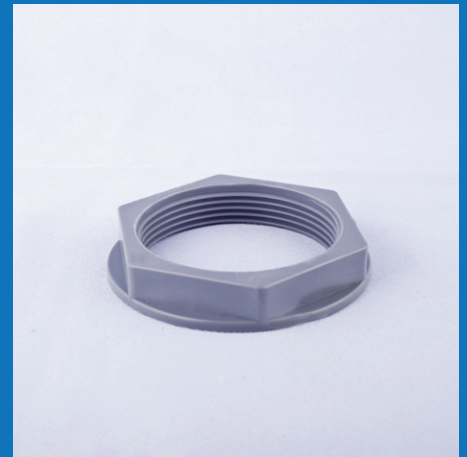
Tank Connector



Flange



Jam Nut



	'D' - Thick Wall 'SWV' - Thin Wall	Inch	1/2"	3/4"	1"	1-1/4"	1-1/2"	2"	3"	4"	6"	8"	10"	12"
		mm	15	20	25	32	40	50	80	100	150	200	250	300
1	Plug		v	v	v	v	v	v						
2	End Cap		v	v	v	v	v	v	v	v	v	✈		
3	Pipe Clip		v	v	v	v	v	v	v	v				
4	Tank Connector		v	v	v	v	v	v						
5	Flange							v	v	v	v	✈	✈	✈
6	Jam Nut		v	v	v	v	v	v						

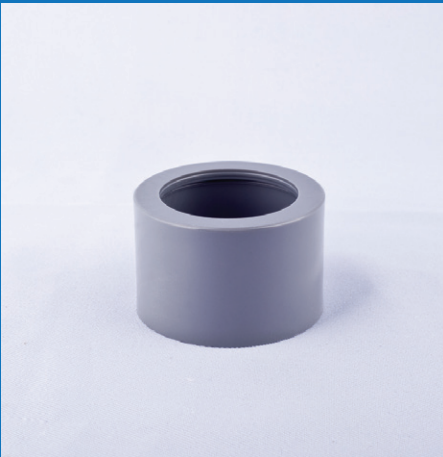
✈ Imported

Grey uPVC Fittings

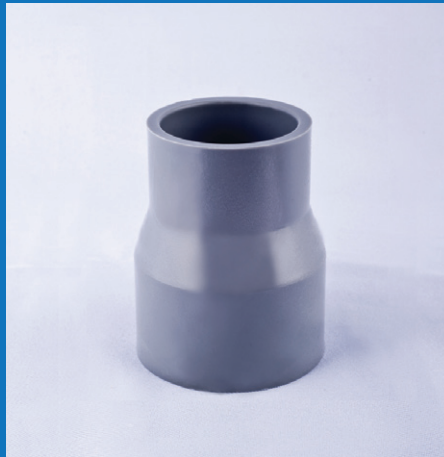
uPVC Pressure & Non Pressure Pipe System

BS 4346, JIS K6743 & JIS K6739

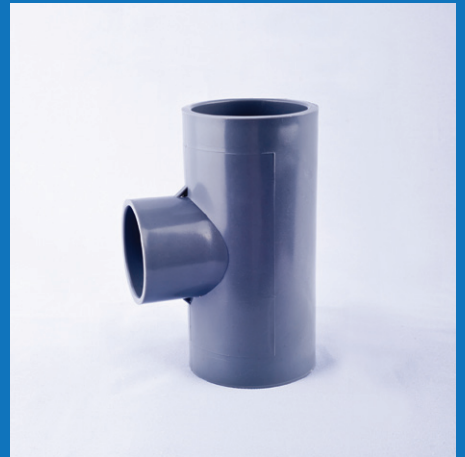
Reducing Bush



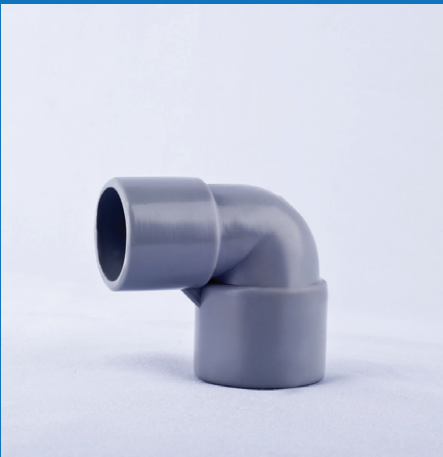
Reducing Socket 'D'



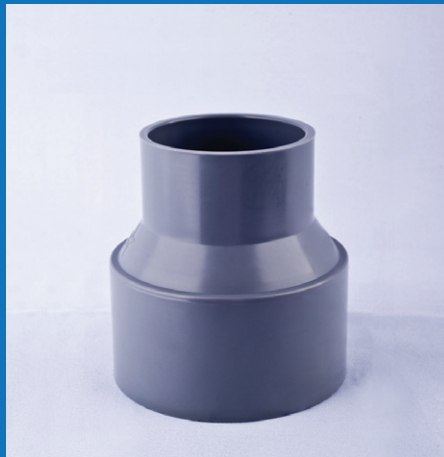
Reducing Tee 'D'



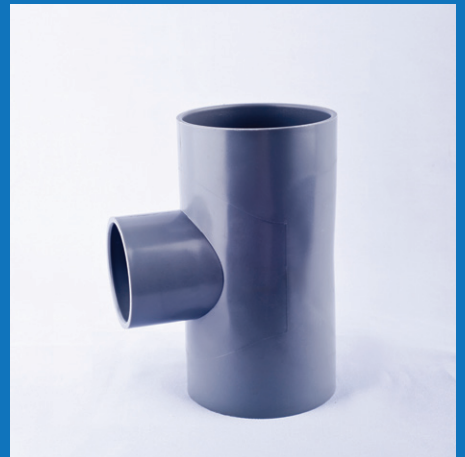
90 Degree Reducing Elbow 'D'



Reducing Socket 'SWV'



Reducing Tee 'SWV'



	'D' - Thick Wall 'SWV' - Thin Wall	Inch	3/4"	1"	1"	1-1/4"	1-1/4"	1-1/4"	1-1/2"	1-1/2"	1-1/2"	1-1/2"	2"	2"	2"
		x	1/2"	1/2"	3/4"	1/2"	3/4"	1"	1/2"	3/4"	1"	1-1/4"	1/2"	3/4"	1"
		mm	20 x 15	25 x 15	25 x 20	32 x 15	32 x 20	32 x 25	40 x 15	40 x 20	40 x 25	40 x 32	50 x 15	50 x 20	50 x 25
1	Reducing Bush		v	v	v			v			v	v			v
2	Reducing Socket 'D'		v	v	v	v	v	v	v	v	v	v	v	v	v
3	Reducing Tee 'D'		v	v	v	v	v	v	v	v	v	v	v	v	v
4	90 Degree Reducing Elbow 'D'		v	v	v										
5	Reducing Socket 'SWV'														
6	Reducing Tee 'SWV'														

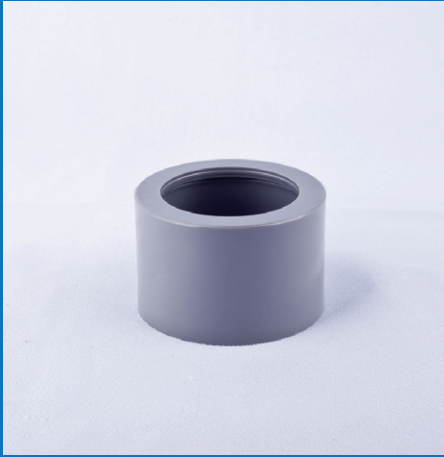
Imported

Grey uPVC Fittings

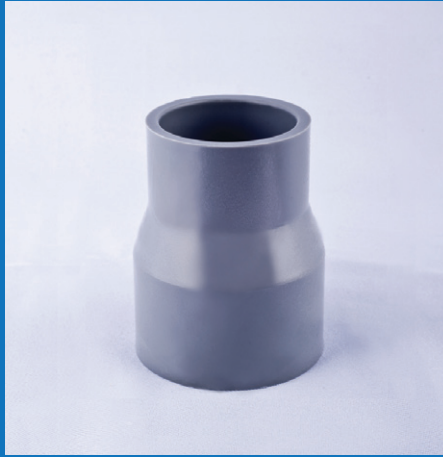
uPVC Pressure & Non Pressure Pipe System

BS 4346, JIS K6743 & JIS K6739

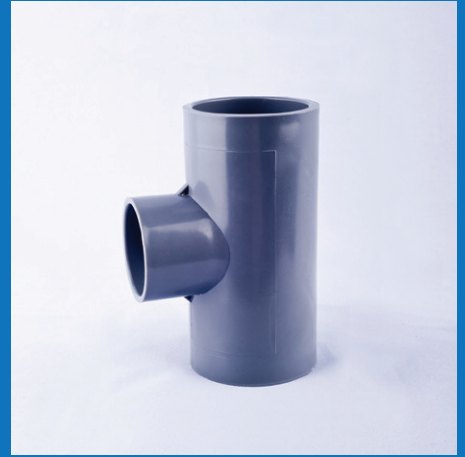
Reducing Bush



Reducing Socket 'D'



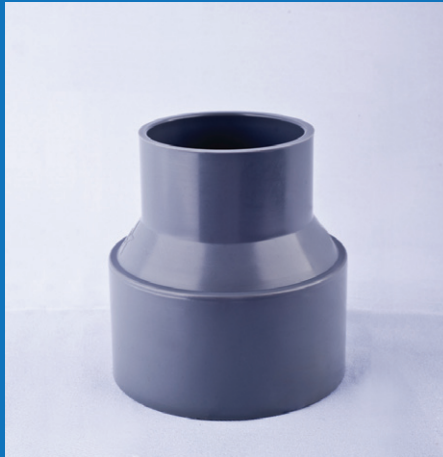
Reducing Tee 'D'



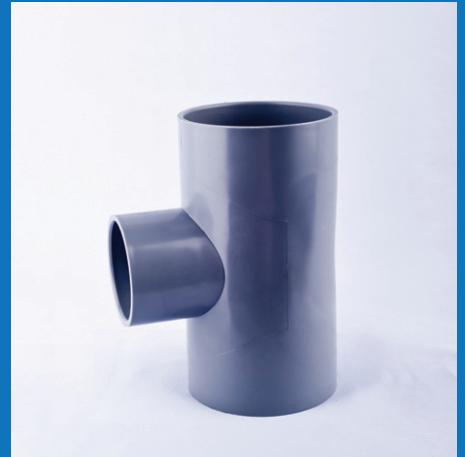
90 Degree Reducing Elbow 'D'



Reducing Socket 'SWV'



Reducing Tee 'SWV'



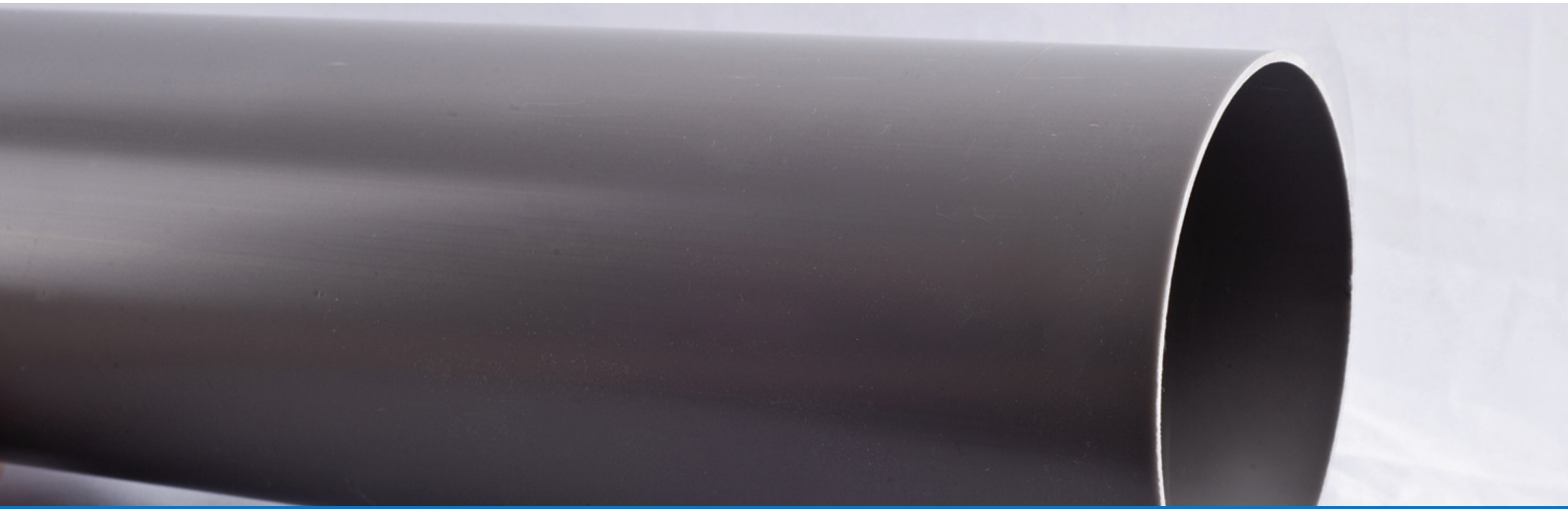
	'D' - Thick Wall 'SWV' - Thin Wall	Inch	2"	2"	3"	3"	3"	4"	4"	6"	6"	8"	8"	10"	10"	
		x	1-1/4"	1-1/2"	1"	1-1/2"	2"	2"	3"	3"	4"	4"	6"	6"	8"	8"
		mm	50 x 32	50 x 40	80 x 25	80 x 40	80 x 50	100 x 50	100 x 80	150 x 80	150 x 100	200 x 100	200 x 150	250 x 150	250 x 200	
1	Reducing Bush		v	v												
2	Reducing Socket 'D'		v	v		v	v	v	v	✘	✘	✘	✘			✘
3	Reducing Tee 'D'		v	v	v	v	v	v	v	✘	✘	✘	✘			
4	90 Degree Reducing Elbow 'D'															
5	Reducing Socket 'SWV'						v	v	v	✘	v	✘	✘			✘
6	Reducing Tee 'SWV'					v	v	v	v	✘	✘	✘	✘	✘	✘	✘

✘ Imported

Grey uPVC Pipes

uPVC Pressure & Non Pressure Pipe System

BS 3505, BS 3506, MS 628, MS 762 & JIS K6741



BS 3505, BS 3506, MS 628 & MS 762

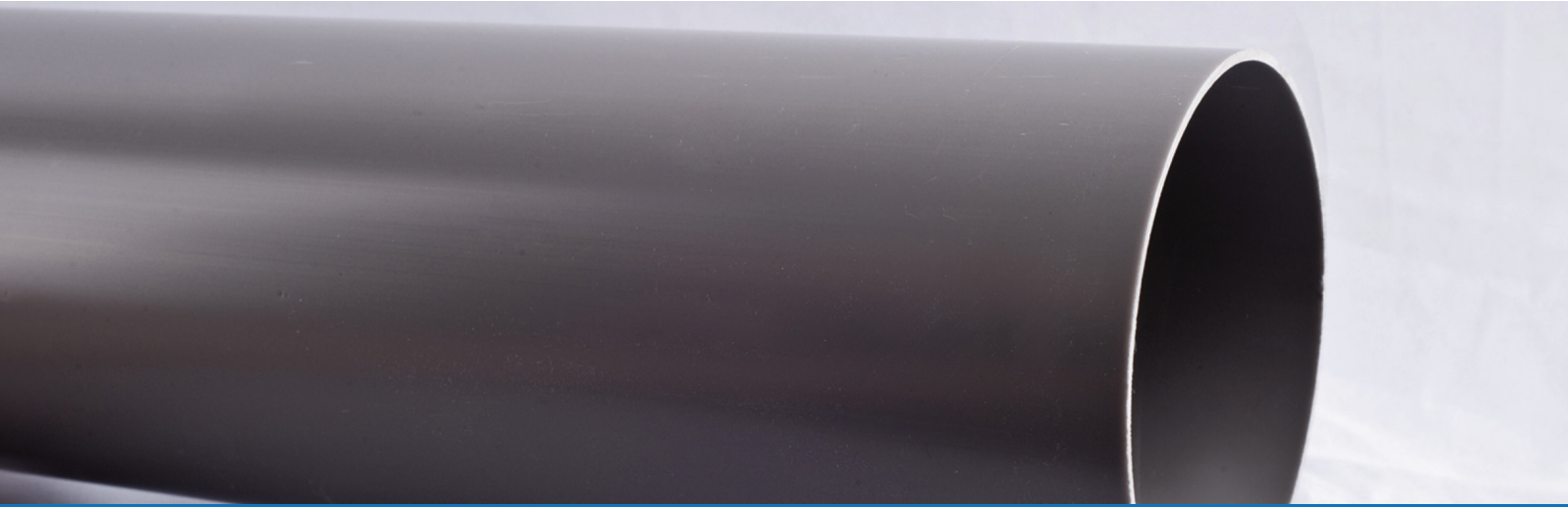
Nominal Size		Outside Diameter (mm)	Wall Thickness (mm)						
			Class O (Non Pressure)	Class B PN 6	Class C PN 9	Class D PN 12	Class E PN 15	Class 6	Class 7
Inch	mm								
1/2"	15	21.2 / 21.5	-	-	-	-	1.7 / 2.1	2.8 / 3.3	3.7 / 4.3
3/4"	20	26.6 / 26.9	-	-	-	-	1.9 / 2.5	2.9 / 3.4	3.9 / 4.5
1"	25	33.4 / 33.7	-	-	-	-	2.2 / 2.7	3.4 / 4.0	4.5 / 5.2
1-1/4"	32	42.1 / 42.4	-	-	-	2.2 / 2.7	2.7 / 3.2	3.6 / 4.2	4.8 / 5.5
1-1/2"	40	48.1 / 48.4	1.8 / 2.2	-	-	2.5 / 3.0	3.1 / 3.7	3.7 / 4.3	5.1 / 5.9
2"	50	60.2 / 60.5	1.8 / 2.2	-	2.5 / 3.0	3.1 / 3.7	3.9 / 4.5	-	5.5 / 6.3
• 2-1/2"	65	75.0 / 75.3	1.8 / 2.2	-	3.0 / 3.5	3.9 / 4.5	4.8 / 5.5	-	-
3"	80	88.7 / 89.1	1.8 / 2.2	2.9 / 3.4	3.5 / 4.1	4.6 / 5.3	5.7 / 6.6	-	-
4"	100	114.1 / 114.5	2.3 / 2.8	3.4 / 4.0	4.5 / 5.2	6.0 / 6.9	7.3 / 8.4	-	-
• 5"	125	140.0 / 140.4	2.6 / 3.1	3.8 / 4.4	5.5 / 6.4	7.3 / 8.4	9.0 / 10.4	-	-
6"	155	168.0 / 168.5	3.1 / 3.7	4.5 / 5.2	6.6 / 7.6	8.8 / 10.2	10.8 / 12.5	-	-
8"	200	218.8 / 219.4	3.1 / 3.7	5.3 / 6.1	7.8 / 9.0	10.3 / 11.9	12.6 / 14.5	-	-
10"	250	272.6 / 273.4	3.1 / 3.7	6.6 / 7.6	9.7 / 11.2	12.8 / 14.8	15.7 / 18.1	-	-
12"	300	323.4 / 324.3	3.1 / 3.7	7.8 / 9.0	11.5 / 13.3	15.2 / 17.5	18.7 / 21.6	-	-

• Uncommon sizes are made to special orders.

Grey uPVC Pipes

uPVC Pressure & Non Pressure Pipe System

BS 3505, BS 3506, MS 628, MS 762 & JIS K6741



JIS K6741 AW (VP) General Purpose Pipes

Nominal Size		Outside Diameter (mm)			Wall Thickness (mm)	
		Basic Size	Tolerance of max. & min. dia.	Ave. Outer dia. Tolerance	Min. Size	Tolerance
Inch	mm					
1/2"	16	22	± 0.2	± 0.2	2.7	+ 0.6
3/4"	20	26	± 0.2	± 0.2	2.7	+ 0.6
1"	25	32	± 0.2	± 0.2	3.1	+ 0.8
1-1/4"	30	38	± 0.3	± 0.2	3.1	+ 0.8
1-1/2"	40	48	± 0.3	± 0.2	3.6	+ 0.8
2"	50	60	± 0.4	± 0.2	4.1	+ 0.8
• 2-1/2"	65	76	± 0.5	± 0.3	4.1	+ 0.8
3"	75	89	± 0.5	± 0.3	5.5	+ 0.8
4"	100	114	± 0.6	± 0.4	6.6	+ 1.0
• 5"	125	140	± 0.8	± 0.5	7.0	+ 1.0
6"	150	165	± 1.0	± 0.6	8.9	+ 1.4
8"	200	216	± 1.3	± 0.8	10.3	+ 1.4
10"	250	267	± 1.6	± 1.0	12.7	+ 1.8
12"	300	318	± 1.9	± 1.1	15.1	+ 2.2

JIS K6741 AE (VU) Drain & General Purpose Pipes

Nominal Size		Outside Diameter (mm)		Wall Thickness (mm)	
		Basic Size	Ave. Outer dia. Tolerance	Min. Size	Tolerance
Inch	mm				
1-1/2"	40	48	± 0.2	1.8	+ 0.4
2"	50	60	± 0.2	1.8	+ 0.4
• 2-1/2"	65	76	± 0.3	2.2	+ 0.6
3"	75	89	± 0.3	2.7	+ 0.6
4"	100	114	± 0.4	3.1	+ 0.8
• 5"	125	140	± 0.5	4.1	+ 0.8
6"	150	165	± 0.6	5.1	+ 0.8
8"	200	216	± 0.8	6.5	+ 1.0
10"	250	267	± 1.0	7.8	+ 1.2
12"	300	318	± 1.1	9.2	+ 1.4
14"	350	370	± 1.3	10.5	+ 1.4
16"	400	420	± 1.5	11.8	+ 1.6
18"	450	470	± 1.7	13.2	+ 1.8
20"	500	520	± 1.9	14.6	+ 2.0
24"	600	630	± 3.2	17.8	+ 2.8

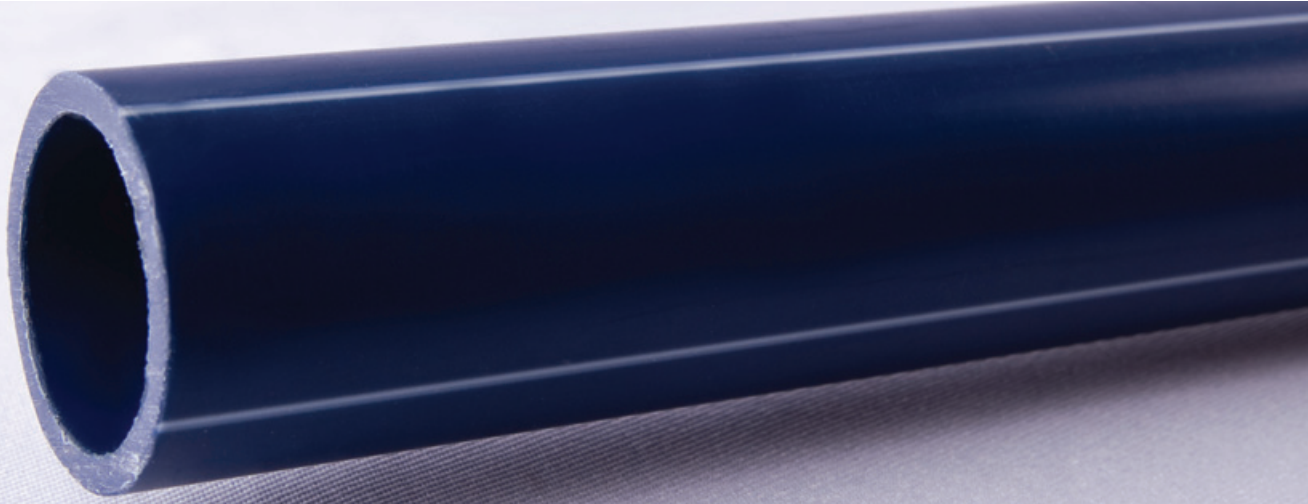
• Uncommon sizes are made to special orders.

Custom Made : Class AEO (Class O) uPVC pipes are manufactured according to JIS K6741 outside diameter only.

Blue ABS Pipes

Pressure Pipe System

MS 1419 & AS 3518



MS 1419 & AS 3518

Nominal Size		Outside Diameter (mm)		Wall Thickness (mm)					
				Class 9		Class 12		Class 15	
Inch	mm	min	max	min	max	min	max	min	max
1/2"	15	21.2	21.5	-	-	-	-	2.0	2.4
3/4"	20	26.6	26.9	-	-	2.0	2.4	2.4	2.9
1"	25	33.4	33.7	1.9	2.3	2.5	2.9	3.1	3.6
1-1/4"	32	42.1	42.4	2.4	2.8	3.1	3.7	3.9	4.4
1-1/2"	40	48.1	48.4	2.7	3.2	3.6	4.1	4.4	5.0
2"	50	60.2	60.5	3.4	4.0	4.5	5.1	5.5	6.3
3"	80	88.7	89.1	5.0	5.7	6.6	7.5	8.1	9.1
4"	100	114.1	114.5	6.5	7.3	8.5	9.5	10.4	11.6
6"	150	168.0	168.5	9.5	10.7	12.5	13.9	15.3	17.0

Blue ABS Fittings

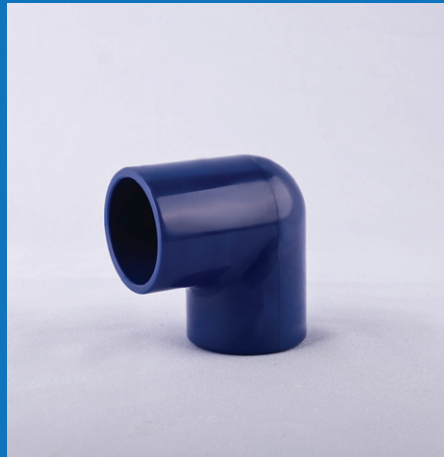
Pressure Pipe System

MS 1419 & AS 3518

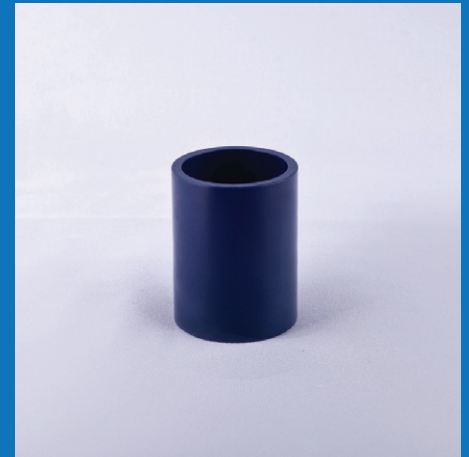
45 Degree Elbow



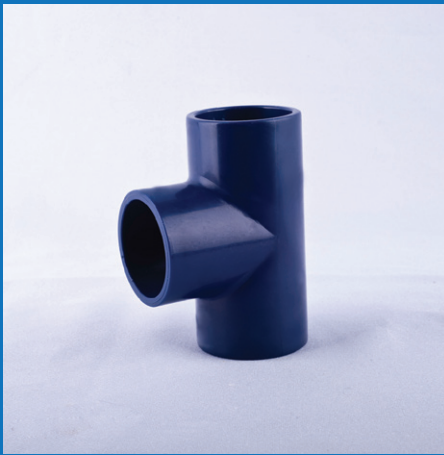
90 Degree Elbow



Socket



Tee



Description		Inch	1/2"	3/4"	1"	1-1/4"	1-1/2"	2"	2-1/2"	3"	4"	6"
		mm	15	20	25	32	40	50	75	80	100	150
1	45 Degree Elbow		v	v	v							
2	90 Degree Elbow		v	v	v	v	v	v	v	v	v	
3	Socket		v	v	v	v	v	v	v	v	v	
4	Tee		v	v	v	v	v	v	v	v	v	

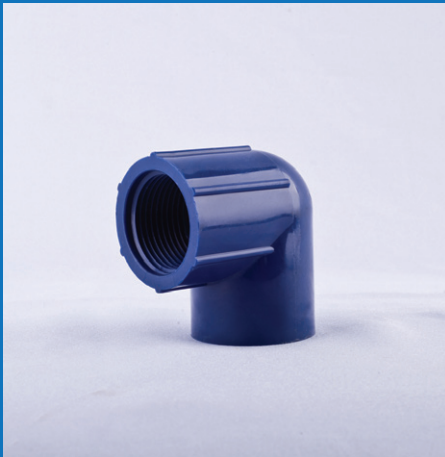
 Imported

Blue ABS Fittings

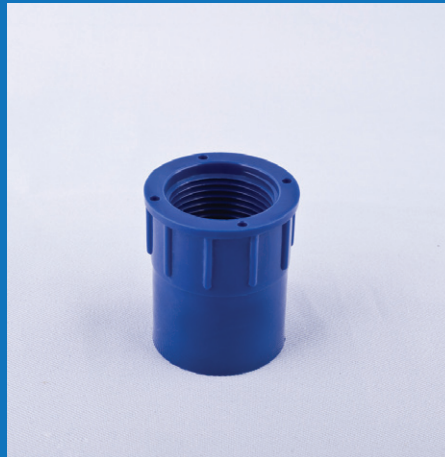
Pressure Pipe System

MS 1419 & AS 3518

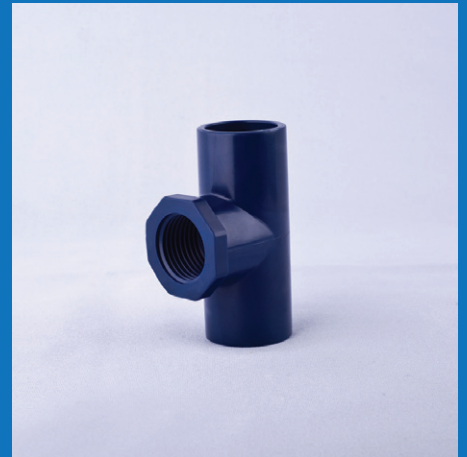
Plain Threaded Elbow



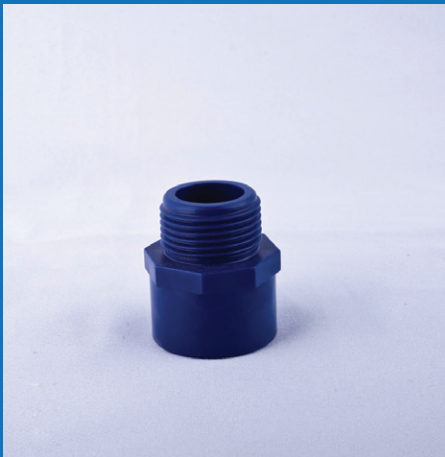
Plain Threaded Socket



Plain Threaded Tee



Valve Socket



Description		Inch	1/2"	3/4"	1"	1-1/4"	1-1/2"	2"	2-1/2"	3"	4"	6"
		mm	15	20	25	32	40	50	75	80	100	150
1	Plain Threaded Elbow		v	v	v							
2	Plain Threaded Socket		v	v	v							
3	Plain Threaded Tee		v									
4	Valve Socket		v	v	v	v	v	v	v	v	v	

 Imported

Blue ABS Fittings

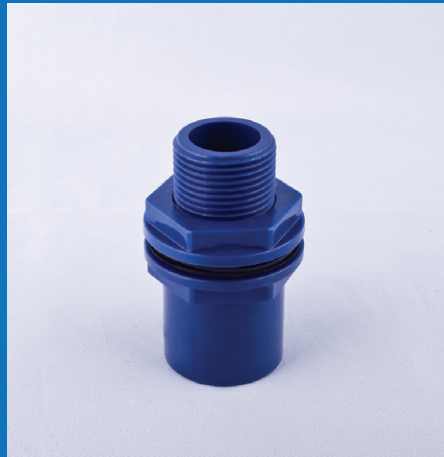
Pressure Pipe System

MS 1419 & AS 3518

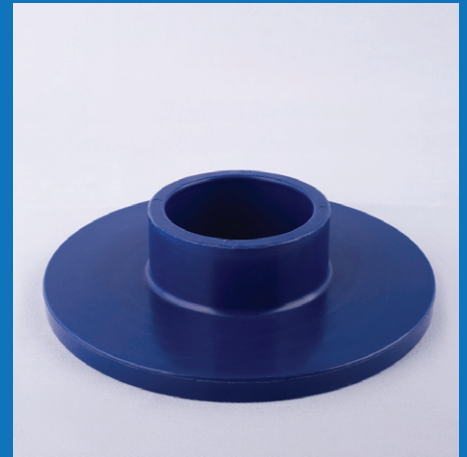
End Cap Plain



Tank Connector



Full Faced Flange Plain



Nipple



Barrel Nipple



Description	Inch	1/2"	3/4"	1"	1-1/4"	1-1/2"	2"	2-1/2"	3"	4"	6"
	mm	15	20	25	32	40	50	75	80	100	150
1 End Cap Plain		v	v	v		v					
2 Tank Connector			v	v	v	v	v				
3 Full Faced Flange Plain							v		v	v	v
4 Nipple					v		v	v	v	v	
5 Barrel Nipple								v	v	v	

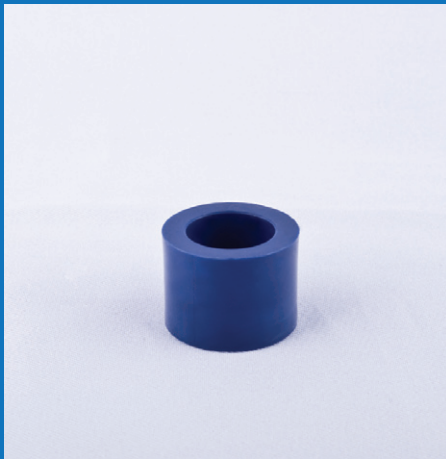
 Imported

Blue ABS Fittings

Pressure Pipe System

MS 1419 & AS 3518

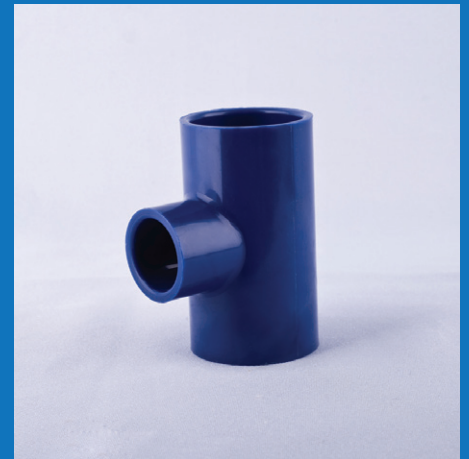
Reducing Bush



Reducing Socket



Reducing Tee



Description	Inch	3/4"	1"	1"	1-1/4"	1-1/4"	1-1/2"	1-1/2"	2"	2"	2-1/2"	3"	3"	4"	4"
	x	1/2"	1/2"	3/4"	3/4"	1"	1"	1-1/4"	1"	1-1/2"	2"	2"	2-1/2"	2"	3"
	mm	20 x 15	25 x 15	25 x 20	32 x 20	32 x 25	40 x 25	40 x 32	50 x 25	50 x 40	75 x 50	80 x 50	80 x 75	100 x 50	100 x 80
1	Reducing Bush	v	v	v	v	v	v	v	v	v	v	v	v	v	v
2	Reducing Socket	v	v	v		v			v						
3	Reducing Tee	v	v	v		v	v		v	v		v			

✈ Imported

Black PP Compression Fittings

PE Pipe System

BS 5114

Male

Female

Male

Female

Male

Female



Threaded Adaptor

Threaded Bend

Threaded Tee

	D x G (mm x inch)	Male Threaded Adaptor	Female Threaded Adaptor	Male Threaded Bend	Female Threaded Bend	Male Threaded Tee	Female Threaded Tee
1	20 x 1/2"	✓	✓	✓	✓	✓	✓
2	20 x 3/4"	✓	✓	✓	✓	✓	✓
3	25 x 1/2"	✓	✓	✓	✓	✓	✓
4	25 x 3/4"	✓	✓	✓	✓	✓	✓
5	25 x 1"	✓	✓	✓	✓	✓	✓
6	32 x 1/2"				✓		
7	32 x 3/4"	✓	✓	✓	✓	✓	✓
8	32 x 1"	✓	✓	✓	✓	✓	✓
9	32 x 1-1/4"	✓					
10	40 x 3/4"	✓					
11	40 x 1"	✓	✓	✓	✓	✓	✓
12	40 x 1-1/4"	✓	✓	✓	✓	✓	✓
13	40 x 1-1/2"	✓	✓	✓			
14	50 x 1-1/4"	✓		✓			
15	50 x 1-1/2"	✓	✓	✓	✓	✓	✓
16	50 x 2"	✓		✓			
17	63 x 1-1/2"	✓					
18	63 x 2"	✓	✓	✓	✓	✓	✓
19	75 x 2"	✓	✓				
20	75 x 2-1/2"	✓	✓	✓	✓	✓	✓
21	90 x 3"	✓	✓	✓	✓	✓	✓
22	110 x 4"	✓	✓	✓	✓	✓	✓

Black PP Compression Fittings

PE Pipe System

BS 5114

Equal Bend



Straight Coupler



Equal Tee



End Cap



	D x D (mm)	Straight Coupler	Equal Bend	Equal Tee	End Cap
1	20	✓	✓	✓	✓
2	25	✓	✓	✓	✓
3	32	✓	✓	✓	✓
4	40	✓	✓	✓	✓
5	50	✓	✓	✓	✓
6	63	✓	✓	✓	✓
7	75	✓	✓	✓	✓
8	90	✓	✓	✓	✓
9	110	✓	✓	✓	✓

Black PP Compression Fittings

PE Pipe System

BS 5114

Reducing Coupler



Reducing Tee



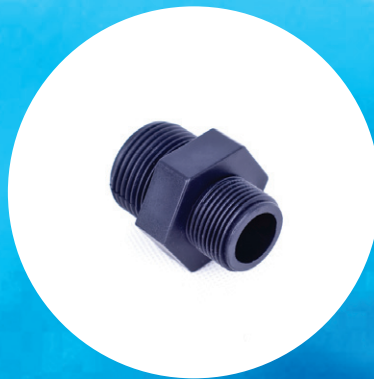
	D x D (mm)	Reducing Coupler	Reducing Tee
1	25 x 20	v	v
2	32 x 20	v	v
3	32 x 25	v	v
4	40 x 20	v	
5	40 x 25	v	v
6	40 x 32	v	v
7	50 x 20	v	
8	50 x 25	v	v
9	50 x 32	v	v
10	50 x 40	v	v
11	63 x 25	v	
12	63 x 32	v	v
13	63 x 40	v	v
14	63 x 50	v	v
15	75 x 40	v	v
16	75 x 50	v	v
17	75 x 63	v	v
18	90 x 63	v	v
19	90 x 75	v	v
20	110 x 63	v	v
21	110 x 75	v	v
22	110 x 90	v	v

Black PP Compression Fittings

PE Pipe System

BS 5114

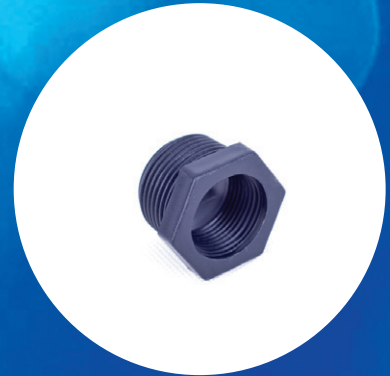
Reducing Nipple



Equal Nipple



Bush



	G x G (inch)	Equal Nipple	Reducing Nipple	Bush
1	1/2"	v		
2	3/4"	v		
3	1"	v		
4	1-1/4"	v		
5	1-1/2"	v		
6	2"	v		
7	3/4" x 1/2"		v	v
8	1" x 3/4"		v	v
9	1-1/2" x 1"		v	v
10	2" x 1"			v
11	2" x 1-1/2"		v	v

Black PP Compression Fittings

PE Pipe System

BS 5114



Polypropylene (PP) Mechanical Clamp Saddle

D x G (mm x inch)		Polypropylene (PP) Mechanical Clamp Saddle	
1	32 x 1/2" 3/4" 1"		v
2	40 x 1/2" 3/4" 1"		v
3	50 x 1/2" 3/4" 1"		v
4	63 x 1/2" 3/4" 1" 1-1/4"		v
5	75 x 1/2" 3/4" 1" 1-1/4" 1-1/2" 2"		v
6	90 x 1/2" 3/4" 1" 1-1/4" 1-1/2" 2"		v
7	110 x 1/2" 3/4" 1" 1-1/4" 1-1/2" 2"		v
8	125 x 1/2" 3/4" 1" 1-1/4" - 2"		v
9	160 x 1/2" 3/4" 1" 1-1/4" 1-1/2" 2"		v
10	180 x - 3/4" 1" 1-1/4" 1-1/2" 2"		v
11	200 x - 3/4" 1" 1-1/4" 1-1/2" 2" 3"		v
12	225 x - 3/4" 1" 1-1/4" 1-1/2" 2" 3"		v
13	250 x - 3/4" 1" - 1-1/2" 2"		v

Black PE Pipes

PE Pipe System

MS 1058



MS 1058

Nominal Size (mm)	Outside Diameter (mm)		Wall Thickness (mm)									
			PN 6.3		PN 8		PN 10		PN 12.5		PN 16	
	min	max	min	max	min	max	min	max	min	max	min	max
20	20.00	20.30	-	-	-	-	-	-	2.0	2.3	2.3	2.7
25	25.00	25.30	-	-	-	-	2.0	2.3	2.3	2.7	3.0	3.4
32	32.00	32.30	-	-	2.0	2.3	2.4	2.8	3.0	3.4	3.6	4.1
40	40.00	40.40	2.0	2.3	2.4	2.8	3.0	3.5	3.7	4.2	4.5	5.1
50	50.00	50.40	2.4	2.8	3.0	3.4	3.7	4.2	4.6	5.2	5.6	6.3
63	63.00	63.40	3.0	3.4	3.8	4.3	4.7	5.3	5.8	6.5	7.1	8.0
75	75.00	75.50	3.6	4.1	4.5	5.1	5.6	6.3	6.8	7.6	8.4	9.4
90	90.00	90.60	4.3	4.9	5.4	6.1	6.7	7.5	8.2	9.2	10.1	11.3
110	110.00	110.70	5.3	6.0	6.6	7.4	8.1	9.1	10.0	11.1	12.3	13.7
125	125.00	125.80	6.0	6.7	7.4	8.3	9.2	10.3	11.4	12.7	14.0	15.6
140	140.00	140.90	6.7	7.5	8.3	9.3	10.3	11.5	12.7	14.1	15.7	17.4
160	160.00	161.00	7.7	8.6	9.5	10.6	11.8	13.1	14.6	16.2	17.9	19.8
180	180.00	181.10	8.6	10.7	10.7	11.9	13.3	14.8	16.4	18.2	20.1	22.3
200	200.00	201.20	9.6	12.0	11.9	13.2	14.7	16.3	18.2	20.2	22.4	24.8
225	225.00	226.40	10.8	12.0	13.4	14.9	16.6	18.4	20.5	22.7	25.2	27.9
250	250.00	251.50	11.9	13.2	14.8	16.4	18.4	20.4	22.7	25.1	27.9	30.8

Plastic Cistern

WC System

MS 795

Push Button Cistern



**Push Button
Flush Valve 40mm**



**Push Button
Flush Valve 50mm**



Single Push Button



Dual Push Button



Plastic Cistern

WC System MS 795

Front Lever Handle Cistern



Square Siphon



Polyfloat



Ball Valve Side Inlet



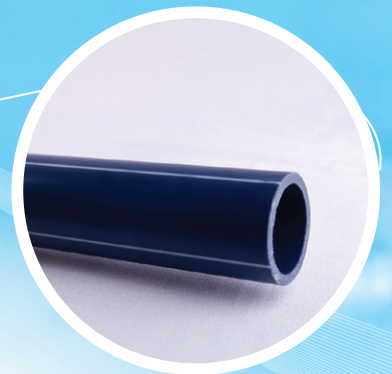
Front Lever Handle



Other Accessories

Plastic Toilet Seat & Cover





IMPORT & EXPORT SDN BHD ^(681806-D)

No. 17-01, Jalan Pendidikan 3, Taman Universiti, 81300 Skudai, Johor, West Malaysia.

Tel: 607-520 6679 | Fax: 607-520 2264 | Email: jci_import.export@yahoo.com | Website: www.jci-concept.com